

Bachelor of Education in Intermediate Phase Teaching

EDUTEL

HIGHER EDUCATION

SAQA ID 119970
NQF LEVEL 07
2026

OUR MISSION

Edutel commits to **academic excellence** in education, and the promotion of scholarship through the **creation of flexible, life-long learning opportunities** and an intellectually stimulating and **culturally vibrant, pleasant and safe environment** in which students and staff can flourish.

Edutel places a **high premium on local relevance**, which is manifested through its **contribution to the prosperity, competitive and quality of life** in South Africa. In order to do so, Edutel must be **sensitive to national needs and societal contexts** of the country as well as the demands of the time. **Local relevance is also manifested in Edutel's commitment** to, and promotion of equity access, equal opportunities, redress, transformation and diversity.

TABLE OF CONTENTS

02	OUR MISSION	
06	GENERAL INFORMATION	
07	BED (INTERMEDIATE PHASE TEACHING)	
10	PROGRAMME STRUCTURE: FIVE YEAR FULL-TIME DISTANCE PROGRAMME	17
11	PROGRAMME STRUCTURE: FIVE YEAR FULL TIME DISTANCE PROGRAMME	17
13	STUDENT SUPPORT	18
16	ASSESSMENT OF STUDENTS	18
		19
		19
		20

This prospectus is valid until 20 June 2026.
A revised prospectus will be available from 21 June 2026.



higher education & training

Department
Higher Education & Training
REPUBLIC OF SOUTH AFRICA

Private Bag 5174, PRETORIA, 0001, 123 Franca Barend Street, PRETORIA, 0002, South Africa
Tel: (012) 312 5911, Fax: (012) 321 5779
Private Bag 93192, CAPE TOWN, 8000, 103 Plain Street, CAPE TOWN, 8001, South Africa
Tel: (021) 469 5175, Fax: (021) 461 4761

Eng. R Sheodass: E-mail: Sheodass.R@het.gov.za, Meeting Nos: 30/07/19 and 27/08/19; File Nos: EHE Pro 367 and EHE Pro 355

Mr A Pelsier
Edutel Higher Education (Pty) Ltd
PO Box 23009
HELDERKRUIJN
1733

By Email: edutel@iafrica.com

Dear Mr Pelsier

**RECOGNITION OF QUALIFICATIONS FOR EMPLOYMENT IN EDUCATION:
BACHELOR OF EDUCATION IN FOUNDATION PHASE TEACHING;
BACHELOR OF EDUCATION IN INTERMEDIATE PHASE TEACHING**

In response to the documentation received from Edutel Higher Education, I wish to inform you that the above programmes have been evaluated in accordance with the policy document *Revised Policy on the Minimum Requirements for Teacher Education Qualifications (2015)* and the final outcome of the evaluation process is as follows:

Bachelor of Education in Foundation Phase Teaching (500 credits; NQF Exit Level 7):
approved and recognised initial teaching qualification for employment in education.

Bachelor of Education in Intermediate Phase Teaching (505-520 credits; NQF Exit Level 7):
approved and recognised initial teaching qualification for employment in education.

Each qualification is evaluated as REQV 14, professionally qualified subject to the *National Education Policy on Recognition and Evaluation of Qualifications for Employment in Education, 2017*.

Edutel Higher Education is reminded that this approval is subject to:

- the institution being registered with the Department of Higher Education and Training as a private higher education institution to offer the programmes; and

- the programmes being accredited by the CHE/HEQC.

Yours sincerely



Dr D Parker

Deputy Director-General: University Education

Date: 16/09/2019

Institution	Programme	Evaluation outcome
Edutel Higher Education	Bachelor of Education in Foundation Phase Teaching	Approved and recognised initial teaching qualification for employment in education.
Edutel Higher Education	Bachelor of Education in Intermediate Phase Teaching	Approved and recognised initial teaching qualification for employment in education.

1. General Information



MEET EDUTEL

Meet Edutel

Edutel is a group of companies specialising in fields of education and training, skills development and services. The first Edutel company was formed in 1999. In 2026 Edutel will celebrate 27 years of excellence in the field of education and training.

Edutel Higher Education (Pty) Ltd is accredited with CHE/HEQC.

Edutel Higher Education (Pty) Ltd is registered with the Department of Higher Education and Training until 31 December 2027, as a private higher education institution under the Higher Education Act, 1997. Registration certificate No. 2017/HE07/001

Is this qualification recognised?

The qualification is registered on the NQF, SAQA ID 119970

The qualification is approved and recognised by the Department of Higher Education and Training as an initial teaching qualification for employment in education.

2. BEd (Intermediate Phase Teaching)

PURPOSE OF THE BACHELOR OF EDUCATION IN INTERMEDIATE PHASE TEACHING

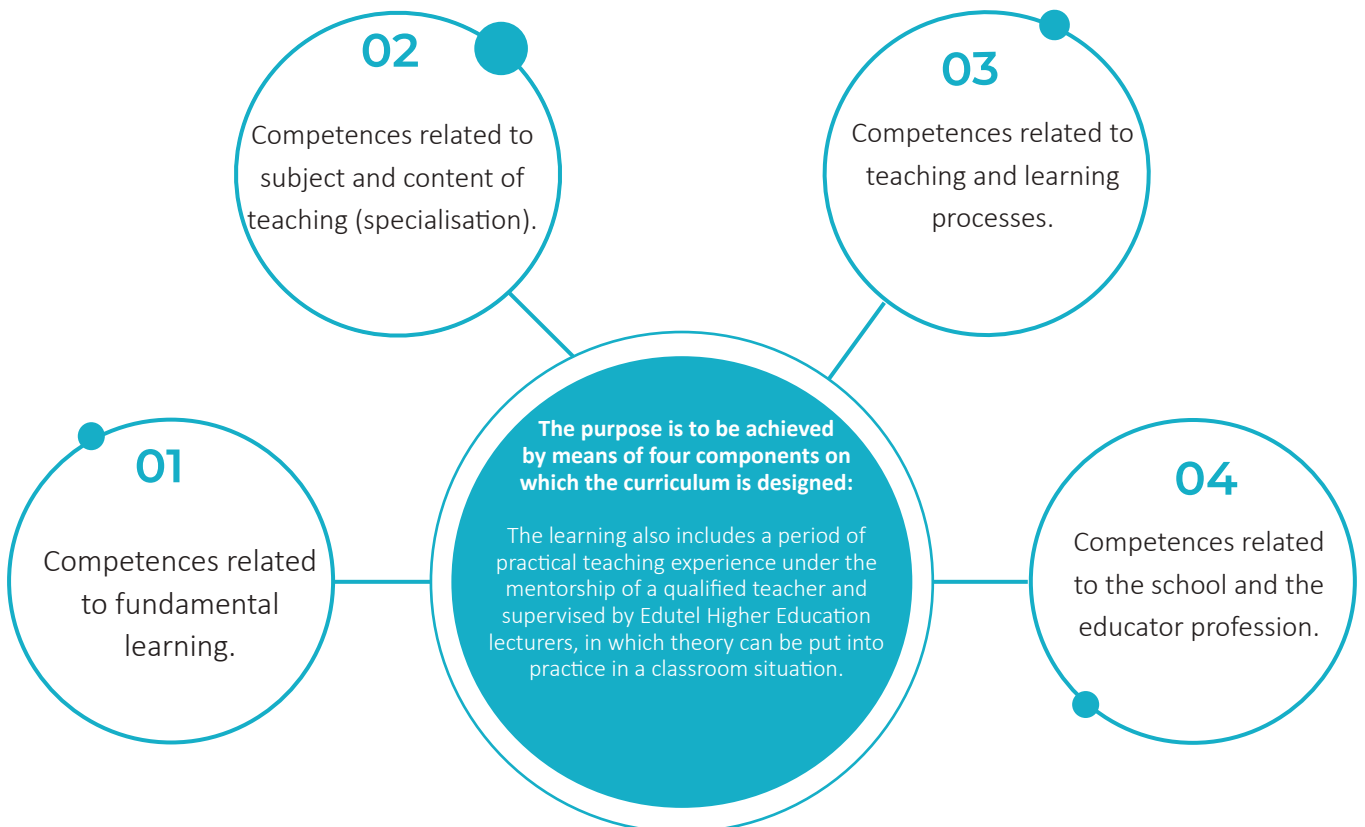
This Bachelor of Education in Intermediate Phase Teaching is a qualification at NQF Level 7 which prepares teachers to teach learners from Grades 4 to 7.

The purpose of the qualification is to deliver professionally qualified beginner teachers for the Intermediate Phase. This is done by providing learner teachers with a well-rounded education that equips them with the required subject content knowledge base, teaching competence, a sound and nuanced understanding of the integrated nature of theory and practice in education and the context of the teaching profession in South Africa. The qualification accredits the development of professional competence informed by sound knowledge and understanding of their area/s of specialisation and of educational theory. This qualification caters for those wanting an educational focus from the outset of their studies.

Specialisation in subject knowledge, together with practical skills and workplace experience in a field of study, will enable successful students to enter the teaching profession and apply their learning in schools in varying contexts.

Students can choose between two endorsements namely:


1. Life Skills and Social Sciences
2. Mathematics, Natural Science and Technology.




**DURATION**

Minimum of four years (full-time distance) or five years (part-time distance)


ADMISSION REQUIREMENTS**The minimum entry requirement is:**

-  A National Senior Certificate (NCS) certified by Umalusi with an achievement rating of 4 (50-59%) in four recognised NCS 20-credit subjects. Students wishing to register for the Mathematics, Natural Science and Technology endorsement are required to have passed Mathematics with at least a D symbol.


OR

-  A Senior Certificate (SC) with matriculation exemption or qualify for the exemption from the Matriculation Board with at least a D symbol on HG or a C symbol on SG in the language of teaching and learning (prior to 2008). Students wishing to register for the Mathematics, Natural Science and Technology endorsement are required to have passed Mathematics with at least a D symbol.


OR

-  A National Certificate Vocational (NCV), NQF Level 4 that meets the requirements as laid down for admission to bachelor's degree study. Students wishing to register for the Mathematics and Natural Science and Technology endorsement are required to have passed Mathematics with at least a D symbol.


OR

-  Professionally qualified teachers holding a former three-year College of Education Diploma or a National Professional Diploma in Education – (360 credits at level 5), may present their qualifications for entry into the BEd with a possibility of transfer of credits, for cognate previous studies. Assessment of prior learning could also lead to entry or an advanced credit standing.

OR

-  Professionally qualified teachers holding a former undergraduate Higher Diploma in Education or a former Further Diploma in Education (NQF Level 6), may present their qualifications for entry into the BEd with a possibility of transfer of credits, for cognate previous studies. Assessment of prior learning could also lead to entry or an advanced credit standing.

OR

-  Teachers who are in possession of a recognised certificate or diploma in education or another relevant field, may also present their qualifications for entry into a BEd with a possibility of transfer of credits, for cognate previous studies. Assessment of prior learning could also lead to entry or an advanced credit standing.

Matured Age Exemption

Should you have not passed your matric with exemption, are above the age of 23 and comply with the above-mentioned language requirements, you can apply for matured age exemption. Please visit the following website for the information, relevant forms and cost: <https://mb.usaf.ac.za/>

Please contact us if you are not sure whether you comply with the admission requirements.

COMPUTER LITERACY AND REQUIREMENTS

It is expected of all students to have access to a computer device and data/Wifi in order to submit all the assignments and/or online examinations on Edutel Online.

The computer literacy online workshop is developed to assist you with writing e-mails to Edutel, accessing the internet in the use of Edutel Online and to complete and submit your assignments on Edutel Online. Should you not have access to a computer or the internet to access Edutel Online and the chat rooms, please visit the nearest Vodacom Teacher Centre.

Communication and ICT Skills is a compulsory module of the BEd (Intermediate Phase Teaching). It is important that every student be computer literate. This module guides you to understand your computer, and the use of Microsoft Word, Excel and PowerPoint. It will also assist you to access the internet, using Microsoft Outlook for e-mails and storage of information. If you still struggle with computer literacy, we recommend that you attend an additional online computer literacy workshop which will be made available to registered students after registration.



SACE REGISTRATION

All BEd (Intermediate Phase Teaching) students must register with SACE after registering for the BEd (Intermediate Phase Teaching). Please visit www.sace.org.za for more information regarding registering with SACE.



WHAT IF I ALREADY HAVE CERTAIN KNOWLEDGE AND EXPERIENCE

Edutel Higher Education is a strong supporter of Recognition of Prior Learning. For this reason, students may apply for RPL.

Edutel accepts Recognition of Prior Learning as an integral part of the academic programme. Students can apply for Recognition of Prior Learning and will need to comply with all the admission requirements of the BEd (Intermediate Phase Teaching).



HOW TO APPLY FOR RPL?

Please mail jpillay@edutel.ac.za for an RPL application form or for more information.



3. Programme Structure: Four-Year Full Time Distance Programme

PLEASE NOTE:

Edutel offers students two options:

- Unemployed students who will study full-time, via distance learning, on the four-year distance learning programme.
- Employed students who will study part-time, via distance learning, on the five-year distance learning programme.

Choosing the First Additional and Second Additional Languages:

- Choosing the First Additional Language: Students have a choice between the following First Additional Languages: Afrikaans, Sepedi, Setswana, isiXhosa or isiZulu.
- Students must select a language studied in matric or any previous qualification that meets the admission criteria. In other words, the chosen language must correlate with the language passed in matric.
- For example, a student that studied isiZulu as a Home Language in matric must choose isiZulu as First Additional Language. The chosen language must be studied in all study years. If we do not offer the language that the student studied in matric, the student can select the next language that they are the most familiar with.
- The Second Additional Language is determined by the First Additional Language choice. If isiZulu is the chosen First Additional Language then one of the listed Sotho languages must be studied as the Second Additional Language (LoCC) or Afrikaans as LoCC.
- If Setswana is chosen as the First Additional Language, then one of the Nguni languages (isiXhosa or isiZulu) or Afrikaans must be studied as the Second Additional Language.
- Take note that the Second Additional Language cannot be the same as the student's Home Language or First Additional Language studied in matric or in a previous qualification completed.

First Additional language chosen (FAL)	Must choose Second Additional Language (LoCC)
isiZulu or isiXhosa	Sepedi or Setswana or Afrikaans
Sepedi or Setswana	isiZulu or isiXhosa or Afrikaans

Endorsement: Life Skills and Social Sciences – 520 credits

Option 1: Four-Year Full -Time Distance Learning (Semester 1)			
First Year	Second Year	Third Year	Fourth Year
Home Language I- English IEHL 510 [20C]	Home Language II- English IEHL 620 [20C]	Home Language III- English IEHL 730 [20C]	Life Skills: Teaching and Learning- ILTL 740 [16C]
** Information and Communication Technology- ICT 500 [15C]	Inclusive Education - IIED 610 [15C]	Classroom Management- ICMA 610 [15C]	Foundations of Law, Ethics and Values in Education – LEV 620 [15C]
Life Skills I: Personal and Social Wellbeing- ILPS 510 [15C]	Life Skills II – Physical Education- ILPE 610 [16C]	Life Skills: Creative Arts- ILCA 630 [16C]	Elementary Mathematics – EMAT 510 [15C]
Education Psychology and Sociology - IEPS 620 [15C]		**Language of Communication SAFB 510, SSEB 510/ SZUB 510/ SSTB 510/ SXHB 510 [15C]	Education Philosophies – EDP 610 [15C]

Option 1: Four-Year Full-Time Distance Learning (Semester 2)			
First Year	Second Year	Third Year	Fourth Year
First Additional Language I- Afrikaans IAFR 510, isiZulu IISI 510, Sepedi ISEP 510, isiXhosa IISX 510 or Setswana ISET 510 [15C]	First Additional Language II- Afrikaans IAFR 620, isiZulu IISI 620, Sepedi ISEP 620, isiXhosa IISX 620 or Setswana ISET 620 [15C]	First Additional Language III- Afrikaans IAFR 730, isiZulu IISI 730, Sepedi ISEP 730, isiXhosa IISX 730 or Setswana ISET 730 [15C]	Teaching and Learning Social Sciences (History and Geography)- STL 740 [16C]
Professional Studies in Education I: Teaching and Learning Theories- IPSE 710 [20C]	Professional Studies in Education II: 21st Century Teaching and learning in Education- IPSE 720 [20C]	Professional Studies in Education III: Critical Thinking and Social Justice in Education- PSE 730 [20C]	Economic and Management Sciences- EMS 510 [15C]
History I- SSH 510 [15C]	History II- SSH 620 [15C]	Geography I - SSG 620 [15C]	Geography II - SSG 630 [16C]
**Work Integrated Learning I- IWIL 510 [15C]	**Work Integrated Learning II- IWIL 620 [15C]	**Work Integrated Learning III- IWIL 630 [20C]	**Work Integrated Learning IV- IWIL 740 [20C]
**Blended Teaching and Learning - BTL 510 [10C]			

140 Credits

116 Credits

136 Credits

128 Credits

TOTAL number of credits for the programme = 520

Endorsement: Mathematics, Natural Science and Technology - 505 credits

Option 1: Four-Year Full -Time Distance Learning (Semester 1)			
First Year	Second Year	Third Year	Fourth Year
Home Language I- English IEHL 510 [20C]	Home Language II- English IEHL 620 [20C]	Home Language III - English IEHL 730 [20C]	** Language of Communication SAFB 510, SSEB 510/ SZUB 510/ SSTB 510/ SXHB 510 [15C]
Mathematics I – IMAT 510 [16C]	Mathematics II- IMAT 620 [18C]	Mathematics III- IMTL 630 [18C]	Mathematics: Teaching and Learning - IMTL 740 [18C]

Option 1: Four-Year Full -Time Distance Learning (Semester 1)			
First Year	Second Year	Third Year	Fourth Year
** Information and Communication Technology - ICT 500 [15C]	Economic and Management Sciences- EMS 510 [15C]	Inclusive Education - IIED 610 [15C]	Foundations of Law, Ethics and Values in Education- LEV 620 [15C]
Education Psychology and Sociology - IEPS 620 [15C]	Education Philosophies – EDP 610 [15C]		
Option 1: Four-Year Full-Time Distance Learning (Semester 2)			
First Year	Second Year	Third Year	Fourth Year
First Additional Language I- Afrikaans IAFR 510, isiZulu IISI 510, Sepedi ISEP 510, isiXhosa IISX 510 or Setswana ISET 510 [15C]	First Additional Language II- Afrikaans IAFR 620, isiZulu IISI 620, Sepedi ISEP 620, isiXhosa IISX 620 or Setswana ISET 620 [15C]	First Additional Language III- Afrikaans IAFR 730, isiZulu IISI 730, Sepedi ISEP 730, isiXhosa IISX 730 or Setswana ISET 730 [15C]	Classroom Management- ICMA 610 [15C]
Professional Studies in Education I: Teaching and Learning Theories - IPSE 710 [20C]	Professional Studies in Education II: 21st Century Teaching and Learning in Education - IPSE 720 [20C]	Professional Studies in Education III: Critical Thinking and Social Justice in Education- PSE 730 [20C]	
Natural Science and Technology I – INST 510 [16C]	Natural Science and Technology II- INST 620 [18C]	Natural Science and Technology III - INST 630 [18]	Natural Science and Technology: Teaching and Learning - NSST 740 [18C]
**Work Integrated Learning I- IWIL 510 [15C]	**Work Integrated Learning II- IWIL 620 [15C]	**Work Integrated Learning III- IWIL 630 [20C]	**Work Integrated learning IV– IWIL 740 [20C]
**Blended Teaching and Learning - BTL 510 [10C]			
142 Credits	136 Credits	126 Credits	101 Credits

TOTAL number of credits for the programme = 505

**** No formal examinations will take place for these modules. For non-examinable modules, a quiz on Edutel Online will count 20%. Two formal assignments contribute 50% and 30%, towards the final mark.**

4. Programme Structure: Five-Year Part-Time Distance Programme

Endorsement: Life Skills and Social Sciences – 520 credits

Option 2: Five-Year Part-Time Distance Learning (Semester 1)				
First Year	Second Year	Third Year	Fourth Year	Fifth Year
Home Language I- English- IEHL 510 [20C]	Home Language II- English- IEHL 620 [20C]	Home Language III- English- IEHL 730 [20C]	** Language of Communication SAF 510, SSE 510, SZU 510, SST 510, SXH 510 [15C]	Professional Studies in Education III: Critical Thinking and Social Justice in Education - PSE 730 [20C]
Life Skills: Personal and Social Wellbeing - ILPS 510 [15C]	Life Skills: Physical Education - ILPE 610 [16C]	Life Skills: Creative Arts - ILCA 630 [16C]	Life Skills: Teaching and Learning - ILTL 740 [16C]	Foundations of Law, Ethics and Values in Education- LEV 620 [15C]
Education Psychology and Sociology- IEPS 620 [15C]	Economic and Management Sciences- EMS 510 [15C]	Professional Studies in Education I: Teaching and Learning Theories- IPSE 710 [20C]	Professional Studies in Education II: 21st Century Teaching and Learning in Education - IPSE 720 [20C]	Education Philosophies- EDP 610 [15C]
Option 2: Five-Year Part-Time Distance Learning (Semester 2)				
First Year	Second Year	Third Year	Fourth Year	Fifth Year
First Additional Language I- Afrikaans IAFR 510, isiZulu IISI 510, Sepedi ISEP 510, isiXhosa IISX 510 or Setswana ISET 510 [15C]	First Additional Language II- Afrikaans IAFR 620, isiZulu IISI 620, Sepedi ISEP 620, isiXhosa IISX 620 or Setswana ISET 620 [15C]	First Additional Language III- Afrikaans IAFR 730, isiZulu IISI 730, Sepedi ISEP 730, isiXhosa IISX 730 or Setswana ISET 730 [15C]	Inclusive Education- IIED 610 [15C]	Teaching and Learning Social Sciences (History and Geography)- STL 740 [16C]
History I- SSH 510 [15C]	History II- SSH 620 [15C]	Geography I- SSG 620 [15C]	Geography II- SSG 630 [16C]	Classroom Management- ICMA 610 [15C]
Elementary Mathematics – EMAT 510 [15C]	**Work Integrated Learning I- IWIL 510 [15C]	**Work Integrated Learning II- IWIL 620 [15C]	**Work Integrated Learning III- IWIL 630 [20C]	**Work Integrated Learning IV- IWIL 740 [20C]
** Information and Communication Technology - ICT 500 [15C]	** Blended Teaching and Learning- BTL 510 [10C]			

110 Credits

106 Credits

101 Credits

102 Credits

101 Credits

TOTAL number of credits for the programme = 520

Endorsement: Mathematics, Natural Science and Technology – 505 credits

Option 2: Five-Year Part-Time Distance Learning (Semester 1)				
First Year	Second Year	Third Year	Fourth Year	Fifth Year
Home Language I- English- IEHL 510 [20C]	Home Language II- English- IEHL 620 [20C]	Home Language III- English- IEHL 730 [20C]	** Language of Communication SAF 510, SSE 510/ SZU 510/ SST 510 / SXH 510 [15C]	Professional Studies in Education III: Critical Thinking and Social Justice in Education - PSE 730 [20C]
Mathematics I – IMAT 510 [16C]	Mathematics II- IMAT 620 [18C]	Mathematics III - IMTL 630 [18C]	Mathematics: Teaching and Learning - IMTL 740 [18C]	Education Philosophies- EDP 610 [15C]
Education Psychology and Sociology- IEPS 620 [15C]	Economic and Management Sciences- EMS 510 [15C]	Professional Studies in Education I: Teaching and Learning Theories- IPSE 710 [20C]	Professional Studies in Education II: 21st Century Teaching and Learning in Education- IPSE 720 [20C]	
Option 2: Five-Year Part-Time Distance Learning (Semester 2)				
First Year	Second Year	Third Year	Fourth Year	Fifth Year
First Additional Language I- Afrikaans IAFR 510, isiZulu IISI 510, Sepedi ISEP 510, isiXhosa IISX 510 or Setswana ISET 510 [15C]	First Additional Language II- Afrikaans IAFR 620, isiZulu IISI 620, Sepedi ISEP 620, isiXhosa IISX 620 or Setswana ISET 620 [15C]	First Additional Language III- Afrikaans IAFR 730, isiZulu IISI 730, Sepedi ISEP 730, isiXhosa IISX 730 or Setswana ISET 730 [15C]	Inclusive Education- IIED 610 [15C]	Classroom Management- ICMA 610 [15C]
Natural Science and Technology I- INST 510 [16C]	Natural Science and Technology II- INST 620 [18C]	Natural Science and Technology III- INST 630 [18C]	Natural Science and Technology: Teaching and Learning - NSST 740 [18C]	Foundations of Law, Ethics, and Values in Education- LEV 620 [15C]
Information and Communication Technology - ICT 500 [15C]	**Work Integrated Learning I- IWIL 510 [15C]	**Work Integrated Learning II- IWIL 620 [15C]	**Work Integrated Learning III- IWIL 630 [20C]	**Work Integrated Learning IV- IWIL 740 [20C]
	** Blended Teaching and Learning- BTL 510 [10C]			
97 Credits	111 Credits	106Credits	106 Credits	85 Credits

TOTAL number of credits for the programme = 505

**** No formal examinations will take place for these modules. For non-examinable modules, a quiz on Edutel Online will count 20%. Two formal assignments contribute 50% and 30%, towards the final mark.**

Work-Integrated Learning (WIL)

Work Integrated Learning (WIL) is the term given to educational activities that integrate academic learning of a discipline with its practical application in the workplace. The aim is to ensure that students develop the ability to integrate their learning through a combination of academic and work-related activities.

Students are required to select a school in the area they live, where Intermediate Phase is being taught. The school must have an appointed HOD for Intermediate Phase and an EMIS number. Apart from selecting a qualifying school, the school must also make a mentor teacher available to mentor and assess the student, during WIL.

Edutel Higher Education reserves the right to approve or reject the selected school. Should Edutel Higher Education not approve of the school, the student will be required to select another school, complete the appendices again, and submit to Edutel Higher Education.

Once Edutel Higher Education has approved the school it is accepted that you will complete your WIL at the specific school. Should you for some reason wish to change your school, please inform the Registrar of such change, to obtain approval for the new school chosen.

Should you register between 1 June and 31 December, you will be required to do your WIL either in August or September. Should you register between 1 January and 31 May, you will be required to do your WIL in February or March.

During the 20 weeks' school-based teaching practice (WIL), the students will engage in teaching within the professional school environment, under the supervision of experienced teachers as mentors, and will be formally assessed by suitably qualified assessors of Edutel Higher Education.

Note:

- All students enrolled for the four-year full-time distance programme will start with the four weeks of teaching practice (WIL) in the second part of their first year.
- All students enrolled for the five-year part-time programme will start with the four weeks of teaching practice (WIL) in the second part of the year, of their second study year.

LEARNING MATERIALS

On registration students will receive the following:

- An **Administrative Booklet** containing all the administrative information they will require to successfully complete their studies.
- A **Study Guide** for all modules, written in the format of the dialogues that would have taken place between the student and the Lecturer in a contact situation.
- A **Tutorial Letter** for each module to further guide their studies.
- **Online Assignments** for each module can be accessed on Edutel Online after registration.

All learning material will be provided in hard copy and online (e-book) or online (e-book) only (depending on your choice). **No additional textbooks need to be purchased.**

HOW DO YOU STUDY AT EDUTEL HIGHER EDUCATION?

The BEd (Intermediate Phase Teaching) is a part-time modular qualification that makes use of a blended mode of learning. This means that students will register for a qualification as a distance student and will work at home on the learning material provided, but have at their disposal several ways in which to supplement their studies. Edutel Higher Education will provide student support through the following distribution channels during the teaching and learning process; Pep courier service (Paxi), e-mail, Multimedia Lectures, Edutel Online learning platform, SMS's, the Edutel Online Mobile App, Facebook, and telephone.

**LANGUAGE OF STUDY**

The language of instruction (study) is English. Should the subject you are enrolled for be an African Language, the instruction for examinations and assignments requires a response in the language concerned.

5. Student Support

Edutel Higher Education will provide student support through the following communication channels during the teaching and learning process:

- Edutel Online teaching and learning platform
- Chat rooms on Edutel Online
- Messaging through Edutel Online
- e-mail
- SMS
- Facebook
- Website
- Multimedia lectures
- Zoom sessions
- Telephone

**ORIENTATION**

Upon registration, the welcome letter with a link to watch the orientation video will be sent to your e-mail address. The orientation video contains information applicable to your qualification, programme structure, purpose, content and how the programme will be delivered.

A live orientation session will take place shortly after the academic cycle starts. Please make sure that you provide us with a reliable and correct email address. If you have not received communication from us via email at the start of the semester, please contact us to confirm your email address/contact details.

**MULTIMEDIA LECTURES**

Edutel Higher Education makes use of multimedia lectures. These multimedia lectures will be presented by the respective Lecturers, who are subject matter experts, to ensure you only receive the very best.

Multimedia lectures can be accessed via the Edutel Online app. These videos can be revisited as many times as needed. There are five multimedia lectures per module that will support you while studying through the themes of each module, provide guidance to complete assignments, and prepare you for the examination.

You will receive multimedia lectures for each module as per the notifications on Edutel Online app, and in confirming letters. In the multimedia lectures the Lecturers will discuss the themes and the activities

in the modules. You will receive guidelines on how to answer questions for the compulsory assignments activities.



CHATROOMS

After you have watched a Multimedia lecture, you have the opportunity to communicate with the lecturers via the Chat feature on Edutel Online.

Benefits

The chat room is useful for gaining more information about the content of each module from the Lecturer for a specific module, as well as the opportunity to clarify any academic challenges that you experience.

The Lecturers can assist and guide you on how to complete assignments and prepare you for the examination for each module.



MEDIA CENTRE SERVICES

The Media Centre covers a wide variety of resources for your use.

- Access to additional reading material, such as reference books and journals which are relevant to your studies.
- Lists of recommended books which are available at other institutions.
- A list of internet websites relevant to your studies and which can be accessed via the web.
- Access to the services of EBSCOhost (electronic library).
- Printing and copying services at a cost.
- Internet access.
- Downloaded Multimedia lectures for use after the presentation date.
- The services of a person to assist in the search for information.



EDUTEL ONLINE APP

In our ongoing efforts to ensure that you receive quality education and stay safe, Edutel Higher Education has created Edutel Online. This innovative **multimedia app** provides access to everything you may need to successfully complete your studies- anytime, and any place!

Edutel Online will give you easy access via your mobile phone to:

- All your study material
- Tutorial letters I & II
- Multimedia lectures
- Assignments and online examinations
- Online ICT training
- An English proficiency programme and assessment
- Study methods/Top Performer Programme
- Information on other programmes offered by Edutel Higher Education
- Programme on Artificial Intelligence for Engaged Study

Through Edutel Online, you can communicate with your Lecturers, support staff, and other important role players. This incredible tool will also send you notifications about your programme.

6. Assessment of Students

To assess achievement of the outcomes of this programme, an approach of continuous assessment will be followed. The assessment process has two dimensions/components that complement each other and are integrated, namely formative assessment and summative assessment

Formative assessment

One three-part compulsory formative assignment per examinable module must be completed and submitted on the Edutel Online Platform in three parts, namely short questions in Part 1; longer paragraph type questions in Part 2; and a set of 50 multiple-choice questions in Part 3.

The three parts respectively contribute on a 20:50:30 basis to the final assignment mark (i.e. the year mark). Students must obtain at least 40% in the assignment mark to qualify to write the examination in each module. The formative assignments are designed to adequately prepare students for examination.

Non-examinable modules will have three assignments. Assignment 1 makes up/contributes 50%, Assignment 2 makes up/contributes 30%, and the quiz makes up/contributes 20% to the final mark of each module.

Assignments must be done and submitted on Edutel Online.

For examinable modules, final marks carry the following weights:

Your Assignment- contributes 30% to the final mark.
Your Examination- contributes 70% to the final mark.

For non-examinable modules, a quiz on Edutel Online will count 20% and two formal assignments contribute 50% and 30%, to the final mark

Tutorial Letter 2 will be made available to assist you in preparing for the examinations.

Summative assessment

All modules (excluding Second Additional Language modules and the ICT module) will be assessed through a formal examination which will be conducted on an annual basis.

Examinations

If you register between 21 June and 20 January, you will write your first semester examinations in May/June the following year.

Should you register between 21 January and 20 June you will write your first semester examination in November of the same year.

7. Rules of Combination

Rules of combination - BEd (Intermediate Phase Teaching)

The programme is designed and structured in such a way that it forms an integrated programme, made up of different modules. Provision is made for logical progression from one module to the next and the interrelatedness of the different modules is emphasised continuously by cross referencing to other modules as the programme unfolds. The interrelatedness of the specialisation modules, fundamental modules and the work-integrated modules (Teaching Practice) is emphasised in all modules.

Progression Modules

- A prerequisite for enrolling for second-year modules in Home Language (LoLT) is the successful completion of the first-year modules.
- A prerequisite for enrolling for second-year modules in First Additional Language (FAL) is the successful completion of the first-year modules.
- A prerequisite for enrolling for second-year modules in History, Geography, Life Skills, Mathematics and Natural Sciences is the successful completion of the first-year modules.
- A prerequisite for enrolling for third-year modules in Home Language, First Additional Language, Life Skills, Mathematics and Natural Sciences is the successful completion of the third-year modules.
- A prerequisite for enrolling for fourth-year modules in Life Skills, Mathematics and Natural Sciences is the successful completion of the third-year modules.

Complying with the requirements for School-based Teaching Practice, is a requirement to complete the qualification.



8. When can I register?

There are two study cycles per academic year.

Study Cycle 1

Register between 21 January and 20 June.
You will write exams on your first semester modules in November and your second semester examination in May/June the following year.

Study Cycle 2

Register between 21 June and 20 January.
You will write exams on your first semester modules in June the following year and your second semester examination in November.

Visit: <https://www.edutel.co.za/bachelor-of-education-in-intermediate-phase-teaching/> to register online.



9. Study Cost & Student Financial Aid

Students can arrange to pay their course fees by bank debit order, cash monthly, cash in advance or by salary stop order (Fundi). Students can apply for study loans at various financial institutions.

The cost to study the BEd (Intermediate Phase Teaching) is on the Application Form.

10. Policies and Procedures

Edutel Higher Education (Pty) Ltd has a comprehensive set of policies and procedures to ensure that students get quality education and support. These include, but are not limited, to:

- Cancellation Policy- Cancellation of course fees will not be allowed once you are accepted and registered as a student. Consideration will only be given in exceptional cases. You may cancel your studies, but you will remain liable for payment of your course fees.
- Assessment Policy
- Code of Conduct for Students
- Student Support Policy
- Disability Policy- Edutel Higher Education seeks to address any unfair discrimination on the basis of disability and thereby provides access for students who wish to further their studies.
- RPL Policy
- Grievance Policy
- Health and Wellness Policy- Edutel Higher Education takes the health and wellness of its staff and students seriously and therefore has a well-developed policy in place, managed by a Health and Wellness Committee.



Students may access these policies on Edutel Online.

11. Governance and Management of Edutel Higher Education

I, the undersigned hereby declare that:

- » Edutel Higher Education (Pty) Ltd is registered with the Department of Higher Education and Training (DHET) and is accredited to offer the programmes reflected in this brochure.
- » Edutel Higher Education (Pty) Ltd will not exceed the number of enrolments that the facilities and equipment can reasonably accommodate.
- » Edutel Higher Education (Pty) Ltd has sufficient space, equipment and instructional material to provide education and training to meet the standards set, and achieve the objectives of each programme.
- » Edutel Higher Education (Pty) Ltd will maintain full records of each student’s admission, academic progress and assessment of learning, in respect of each programme.
- » All the sites listed in this application are administered and controlled by Edutel Higher Education (Pty) Ltd.
- » Edutel Higher Education (Pty) Ltd has the necessary academic and support staff, with appropriate qualifications and experience, to achieve the objectives of each programme.
- » Officials from authorised institutions will be allowed unconditionally to conduct site visits for the purpose of verification and to ensure compliance with the conditions of registration.

C Theron
CEO

12. Directors, Chief Executive and Senior Management

Directors	<ul style="list-style-type: none"> • Andries Bernardus Pelser • Oscar Stephen Bashing • Jolene Pillay
Chief Executive Officer	<ul style="list-style-type: none"> • Chanel Theron
Senior Management	<ul style="list-style-type: none"> • Oscar Stephen Bashing- General Manager • Prof Jan Heystek- Academic Head • Kevin Schoultz- Registrar • Dr Roger Looyen - Academic Programme Coordinator • Jolene Pillay- Programme Coordinator Administration

13. Qualifications of Academic Staff

Academic Advisory Board

Prof J Heystek (Academic Head)	HED, BA, Hons, MEd, PhD
Prof K Bipath	HED (Springfield College of Education), BA (Unisa), BEd Hons (RAU), MEd (RAU), DEd (UJ)
Prof PJ Du Plessis	BA (Unisa), BEd Hons (Unisa), MEd (RAU), PhD (UP)
Prof HJ Joubert	BSc (UP), TDHE (NKNWUP), FDE (CEFT), BEd (UP), MEd (UP), PhD (UP)
Prof LM Swanepoel	BA (UFS), HED (UFS), BEd Hons (UFS) MA (UFS), D.LITT (UFS)
Prof HJ van Vuuren	BA (UFS), HDE (UFS), BA Hons (UFS), BEd (UFS) MEd (UFS), PhD (NWU)
Dr M Frazer	National Diploma Marketing (Technical Witwatersrand), BTech Marketing (UNISA), Masters in Commercial Marketing Management (UJ), Professional Diploma in Digital Marketing (Digital Marketing Institute), PhD
Dr D Naidu	BA (University of Westville), HED (Unisa), BEd (Unisa), FDE (Rand Afrikaans University), MEd (Rand Afrikaans University), PhD (Wits)
Dr JW van Rooyen	BSc (UP), TDHE (NKP), BSc Hons (RAU), BEd (UP), MEd (UP), PhD (UP)

Academic Staff

Dr R Looyen (Academic Programme Coordinator)	HED (WITS), Licentiate in Pianoforte, BA Degree, BEd, MEd, PhD
Dr MG Botha	BA (NWU), BEd Hons (NWU), MEd (UFS), PhD (UP)
Dr Z Made	BA, BA Hons, MEd, DLitt
Dr A Van Dyk	HED (Teachers Training College Pretoria), FDE, BEd Hons (UNISA), ACE (Matthew Goniwe School of Leadership & Governance), MEd (UNISA), PhD (UNISA)
Mr D Chavalala	SPTD, Further Diploma in English, BA, BEd Hons, Master's Degree in Public and Development Management, MEd
Ms D Chuene	BA (UL), BEd Hons (UNISA), MEd (TUT)
Ms L de Beer	Diploma in Visual Technology, BEd
Ms N Jonker	BA (UP), BEd Hons (UP), PGCE (Aros)

Mr DW Jordaan	HED (RAND), BA (UNISA), BEd Hons (UP)
Ms M Joubert	BCom, BSc, MBA
Mr N Langa	BA (WITS), BA Hons (WITS), MEd (WITS), PhD (WITS)
Ms M Lombard	BEd (UP), BEd Hons (UP), MEd (UP)
Mr K Magagane	Diploma in Education, ACE (TUT), BEd Hons (UP)
Mrs CD Mashamaite	BA (University of the North), BEd Hons (UNISA), MTECH (TUT)
Ms P Mosime	Bachelor of Arts Honours in African Languages & Linguistics (WITS), MEd in African Languages & Linguistics (WITS)- In Progress
Mr A Ndou	FDE (UJ), SPTD (Soweto College of Education), BEd Hons (UJ), ACE (Matthew Goniwe School of Leadership Governance), Certificate in Human Resource Management (Unisa), MEd (Unisa)
Mr MM Nyambi	HED (Giyani College of Education), Further Diploma in Education Management (UP), Bed (UP), Diploma in Public Management (Regenesys), Programme in Human Resource Management (UNISA), Med (UNISA)
Ms C Ribeiro	BA (WITS), BA Hons (WITS)
Ms E Swanepoel	BA (UP), BA Hons (UP), PGCE (UNISA), MEd (UP)
Ms T Tewson	Diploma of Theology (TEEC), Diploma in Interior Design (The Decer School), BA (UNISA), PGCE(UNISA), BA Hons (UNISA)
Mr C van Dyk	HOD Diploma (TTCP), Jeugweerbaarheid Diploma (TTCP), Conduct moderation of outcomes-based assessments (University of Stellen-bosch), BEd (UP), BEd Hons (NWUP), Ed (UP), MEd (RAU), Advanced Certificate in Education (Matthew Coniwe School of Leadership and Governance),
Mr JC van Dyk	HED (Teachers Training College Pretoria), Jevgweerbaarheid Diploma (Teachers Training College Pretoria), BEd (UP), BEd Hons (NWU), MEd (UP), MEd (RAU), ACE (Matthew Goniwe School of Leadership and Governance)
Mr M van Westhuizen	Teacher's Diploma(Paarl Teacher's Training College), BA (University of Stellenbosch), BA Hons (UCT), Qualified Coach (University of Stellenbosch Business School), M Phil in Life Long Learning (University of Stellenbosch)
Mrs DB Wilson	BEd (UP), Bsc (UP)

For a comprehensive list of services offered by the Edutel Group, visit our website at:
www.edutel.ac.za



UTEL

SOCIAL MEDIA



Contact Detail:
+27 (11) 760 3668

Mail:
marketing@edutel.ac.za

Website:
www.edutel.ac.za

Address:
Edutel Building, 1st Floor
Cnr Ontdekkers Road & Crane
Avenue Horison, Roodeport
1724